



The Village Medical Centre

27 Grove Road
Wallasey
CH45 3HE
0151 691 1112

August 2025 Newsletter

Web: <https://thevillagemedicalcentre.org.uk/>

 TheVillageMedicalCentre

Welcome to The Village Medical Centre's latest newsletter! We're delighted to connect with you and share updates from our practice and valuable health information to support your well-being. This month's edition contains information about

Closure Notice:

We will be closed on **Monday 25th August** for the August bank holiday weekend.

Normal opening hours will resume from Tuesday 26th April 8-6:30pm). It is important you check when you are due to order your medication, always allow a few extra days for the bank holiday closures. We also advise you to check the opening hours of your local pharmacy for the bank holiday weekend.

If you run out of medication over the bank holiday weekend you can contact 111 either via telephone or their website to obtain an emergency prescription.

If you require medical attention during the bank holiday weekend we advise to use the 111 triage service via their website or telephone and they will be able to provide medical advice. If required 111 can book an appointment with an out of hours clinician.

You can also access the 111 triage via the NHS app. In the case of emergency please ring 999.

World Breastfeeding week

We wanted to use this opportunity to spread the awareness of some of the resources/support available around breastfeeding. Please visit some of the links below:

breastfeeding.support

www.nhs.uk/start-for-life/baby/feeding-your-baby/breastfeeding/

www.nationalbreastfeedinghelpline.org.uk

0300 100 0212

2025 GP Patient Survey

Each year, the NHS conducts a **national** GP Patient Survey, which is designed to gather feedback from patients about their experiences with their GP practice. This year 328 surveys were sent out to our patients, with 127 responses made. The results have now been published and we are pleased to share the highlights and how our practice scored above both the national and Cheshire and Merseyside average in all key areas.

This is an excellent achievement and a true testament to the hard work and dedication of the team here at the surgery. We would like to extend our thanks to all patients who took the time to complete the survey – your feedback is invaluable in helping us continually improve our services.

Looking ahead, we are excited to launch our own 2025 Patient Survey, designed specifically to build on the national results. This practice-produced survey asks more practice specific questions which we hope will allow us to better understand the experience of our patients when interacting with the surgery.

We encourage all patients to complete the survey, which will be available both online and in paper format. You can easily access the online version by scanning the QR code on the right. Alternatively, printed copies will be available at reception.

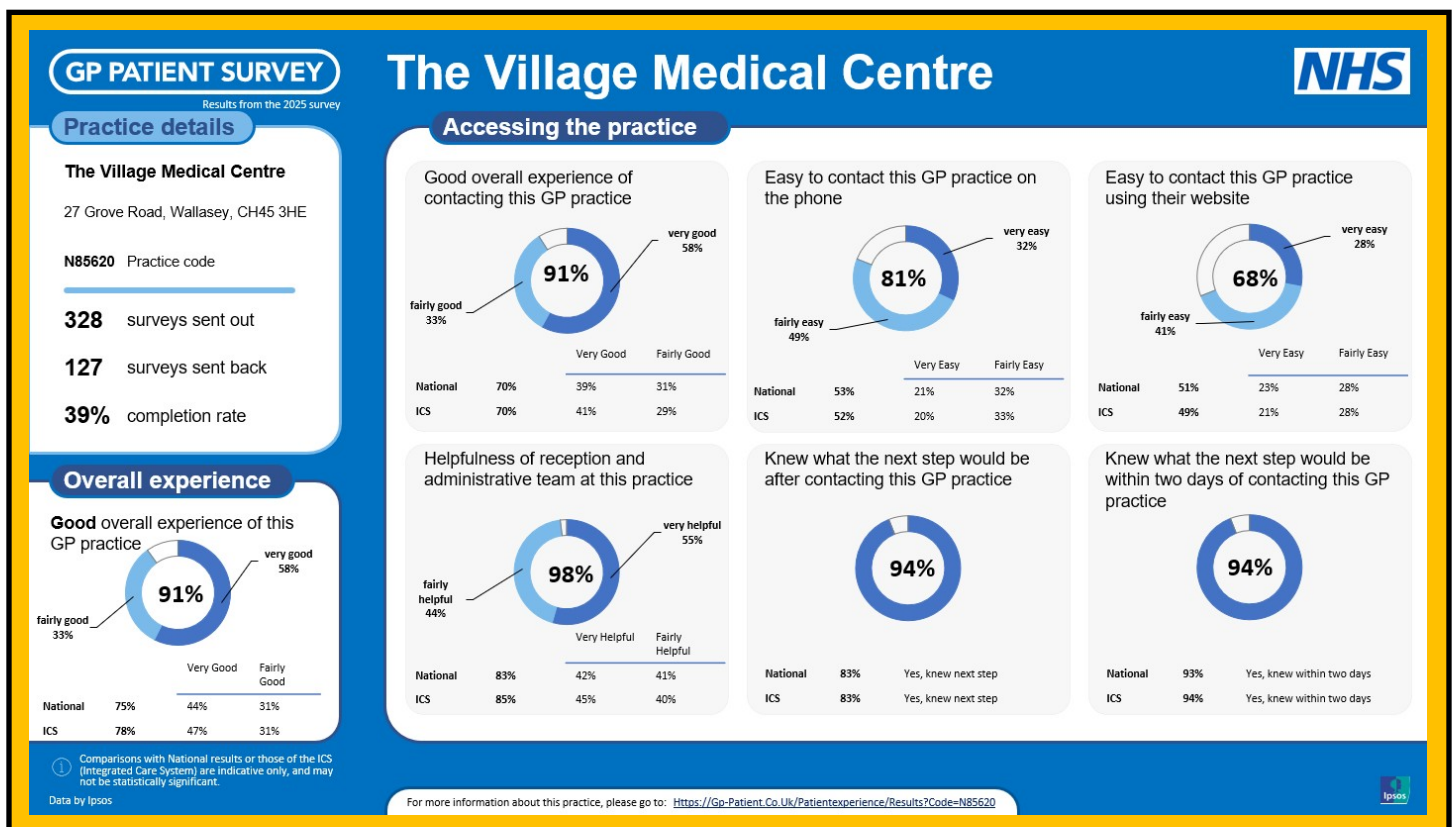
The survey will remain open until Sunday 17th August.

Thank you again for your continued support as we work to improve the care we provide to you.

Alan Courtenay, Practice Manager

Find out more gp-patient.co.uk/patientexperience/results?code=N85620

The Village Medical Centre 2025 Patient Survey



Weight Management Medication:

The new weight management medication 'Tirzepatide' (brand name Mounjaro®) is shortly being made available to NHS patients to support weight loss.

The drug is being made available on a phased basis, with the first group of people eligible under the national criteria being people who:

Have a body mass index (BMI) of 40 kg/m² or more (or 37.5 kg/m² for people from minority ethnic family backgrounds)

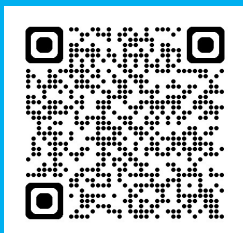
and

Have at least four of the following long-term conditions:

1. Type 2 diabetes
2. Hypertension (high blood pressure)
3. Dyslipidaemia
4. Established cardiovascular disease
5. Obstructive sleep apnoea

Find out more at: www.cheshireandmerseyside.nhs.uk/your-health/prescribing/statements/mounjaro-tirzepatide/

Sign up for our newsletter to receive a copy straight to your inbox:



Pharmacy First Service:

As some of you will be aware the pharmacy offer advise on a range of illness and can now prescribe short courses of antibiotics should they be required. Our admin team can complete the referral over the phone, there is no need for a doctor appointment.

Find out more:

www.nhs.uk/nhs-services/pharmacies/how-pharmacies-can-help/



GEORGIE AND SAVANNAH'S SKYDIVE FOR CLAIRE HOUSE

WE HAVE NOW RAISED £1,250 WHICH IS INCREDIBLE, WE CANNOT
THANK YOU ALL ENOUGH. PLEASE KEEP SHARING OUR PAGE TO HELP
US RAISE AS MUCH MONEY AS POSSIBLE FOR CLAIRE HOUSE.

EVERY PENNY MAKES A DIFFERENCE!



Claire House
CHILDREN'S HOSPICE

Scan the QR code or use the link below to donate to
our just giving page:

www.justgiving.com/page/savgskydive